



Case Study

S&K (Coventry)
Limited Nisa Local



Case Study

S&K Supermarket (Coventry) Limited

Nisa Local
Charlie Sohal Proprietor

The owners of S&K Supermarket were introduced to the services of SolX Energy by our trading partners at Get Solutions. They soon realised they could dramatically reduce their overheads and increase the well-being of staff and customers to their shop, on Barkers Butts Lane, in Coventry.



Halogen lighting - signs of overheating & flickering were present

Our first job was to address the low levels of light in the shop. The owners were reliant on old lighting delivered via a range of T8 lighting strips and halogen fittings. These units required regular maintenance due to the number of operating hours which resulted with the lamps expiring or overheating.

Once SolX Energy had been provided with annual billing information, we carried out a full site survey to assess the number, positioning and types of lighting units currently installed along with lighting meter readings to assess the lumen levels.



Low volumes of natural light and lumen levels



T8 lighting - requiring regular maintenance

Case Study

S&K Supermarket (Coventry) Limited

Nisa Local
Charlie Sohal Proprietor

With the information gained from the site survey, SolX Energy returned to S&K (Coventry) Limited with a business proposal which would significantly increase the lumen levels whilst reducing the shops operational costs and maintenance requirements.



^ **50,000 hrs**
LED life expectancy significantly reduces maintenance costs



Improved light quality, resulting in brighter product displays and reduced shadows.

SolX Energy's energy proposal provided details of numerous cost saving technologies which included, LED's, Refrigeration technologies including Chill scoops, Bluewind fans, Gcubes, & Aerofoils as well as Itrack controls, Ephase Voltage Optimisation and time management devices.

Qualifying for funding, S&K Supermarket could take advantage of the technology, with no capital outlay and still benefit from the on-going savings.

Operating 76 hours a week, one of the main concerns of the owners was disrupting the normal flow of shoppers as this would have a negative effect on daily takings. Sensitive to client's requirements, SolX Energy made the necessary arrangements to have the installation process take place outside of the clients normal business hours.



No disruption to client business activity

Case Study

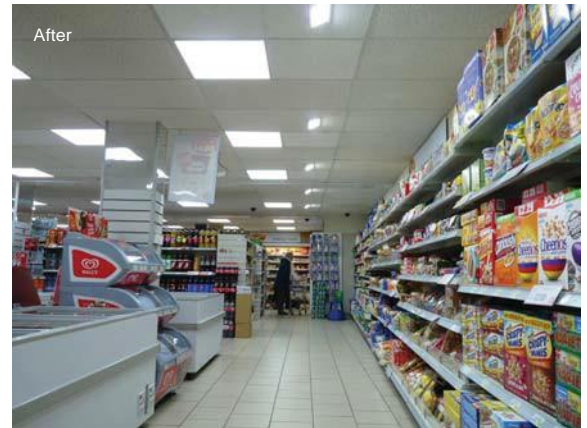
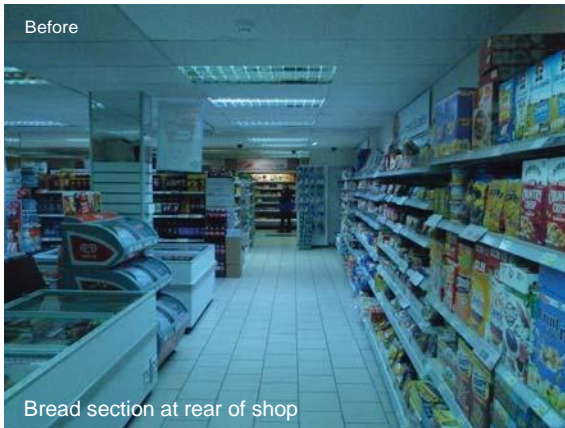
S&K Supermarket (Coventry) Limited

Nisa Local
Charlie Sohal Proprietor

Installation started on a Monday with a fitting lead time of 1 week, however, the majority of the lighting installs were completed within the first couple of nights, instantly impacting the overall ambience of the shop. Not only were the lumen levels increased, but the previously 'darker areas' of the shop were now fully illuminated, showing off the full vibrancy of the products.



LED lamps, combined with smart controls, can cut CO2 emissions **50-70%**



In particular, the rear of the shop where fresh bread was displayed was one of these areas and following the first round of installs, this was transformed with a clean, non-flickering light which completed the shops fresh bread displays.



“ I was really impressed at the difference, the new lighting has made, especially in the bread section, since the install I've noticed an uptake in the sales and shoppers generally seem to be spending more time looking through the products on display... ”

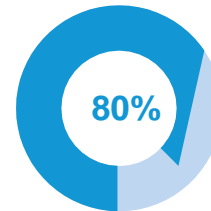
Charlie Sohal

Case Study

S&K Supermarket (Coventry) Limited

Nisa Local
Charlie Sohal Proprietor

One of the recommendations SolX Energy proposed for S&K (Coventry) Limited was having their fridges fitted with the revolutionary device - Aerofoils. The technology which takes its inspiration from Formula 1 motor racing, directs the refrigerated air back in towards the products at each shelf thus increasing refrigeration efficiency by over 10%.



up to **80%** savings when used with smart controls.



This in addition, to changing the light fittings, installing new motors and stop-start energy management devices are expected to increase savings on S&K (Coventry) Ltd fridges by a further 25%.



Retro-fit refrigeration scoops reduce consumption by ^10%

“ I am so impressed with the savings, not just in monetary terms, but also the amount of energy I’m saving.

I can say that I’ve reduced my carbon footprint and that my business is more environmentally sustainable...

Charlie Sohal ”

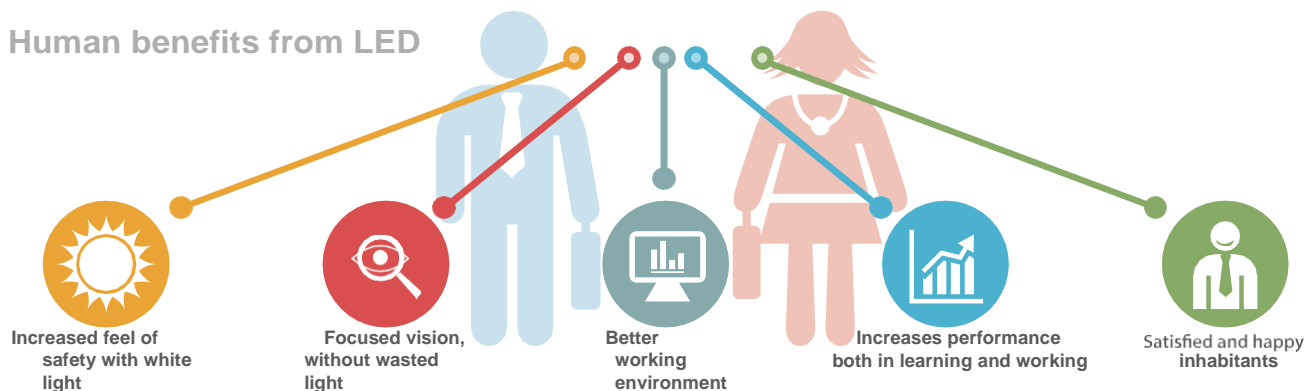


Case Study

S&K Supermarket (Coventry) Limited

Nisa Local
Charlie Sohal Proprietor

Human benefits from LED



RESULTS

Since the energy saving installation work, S&K (Coventry) Limited have recorded a consumption decrease of 250kWh per day.

On a 10 pence per kilowatt hour rate, this equates to a mean annual saving of over

£9,600.00 and **95,265kWh*** of energy.

Project ROI for S&K (Coventry) Limited is 2.4 years.

“ I would definitely recommend the services of SolX Energy. They’ve provided an all-encompassing energy reduction service, including reducing how much I pay for my energy via Get Solutions, through to reducing consumption with pioneering technologies. Moreover, all of this has been achieved on time and with the minimum disruption. ”

Charlie Sohal

* Figures above are based upon consumption period of 35 days during March/April 2016 and are projected for a 12 month period



SolX Energy Ltd

Ribble Court Business Centre
1 Mead Way
Padiham
BB12 7NG

Telephone: 0844 33 00 321

Email: info@solxenergy.com

www.solxenergy.com